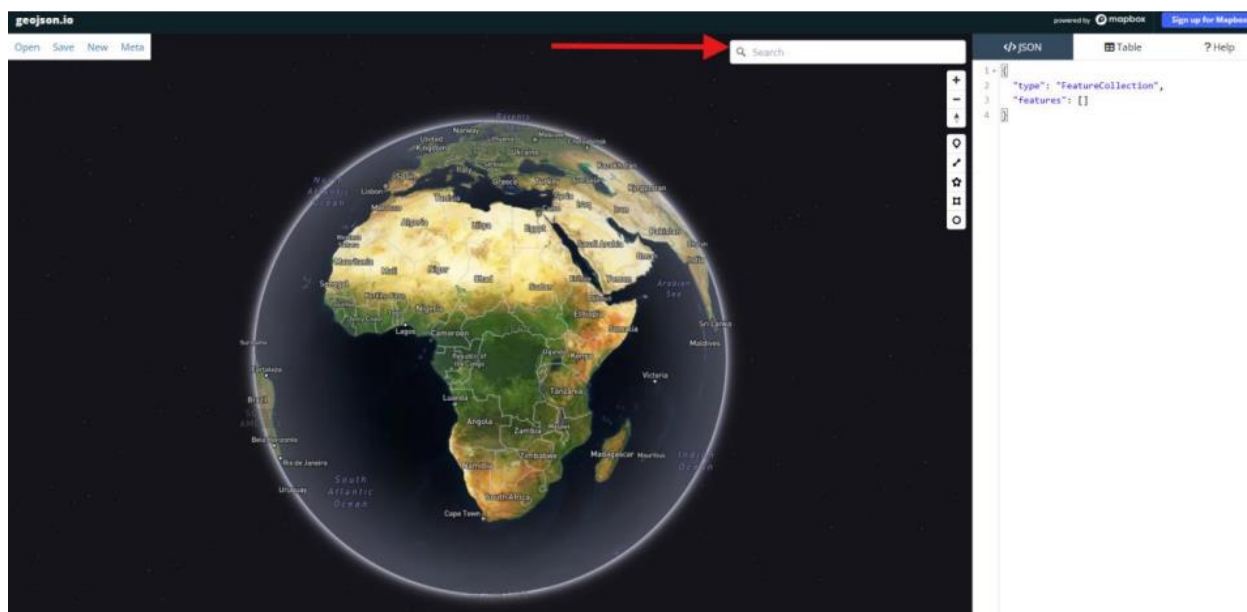


Guidance on how to submit geolocation

Step 1

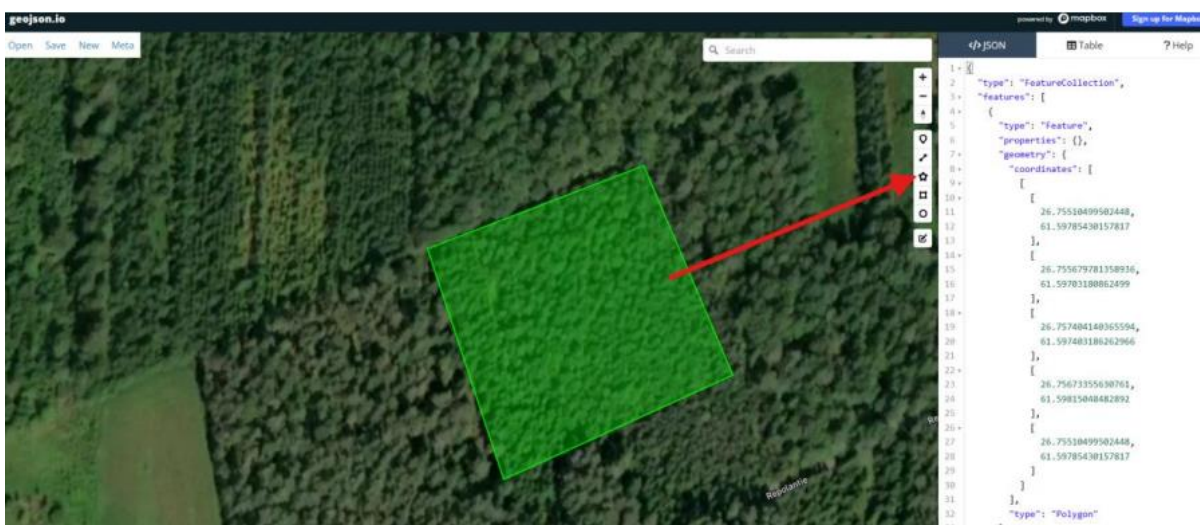
Logon to the website www.geojson.io and insert the address, province or country of the forest in the search engine field.

Alternatively it is possible to point out the geolocation directly on the map to find the location.



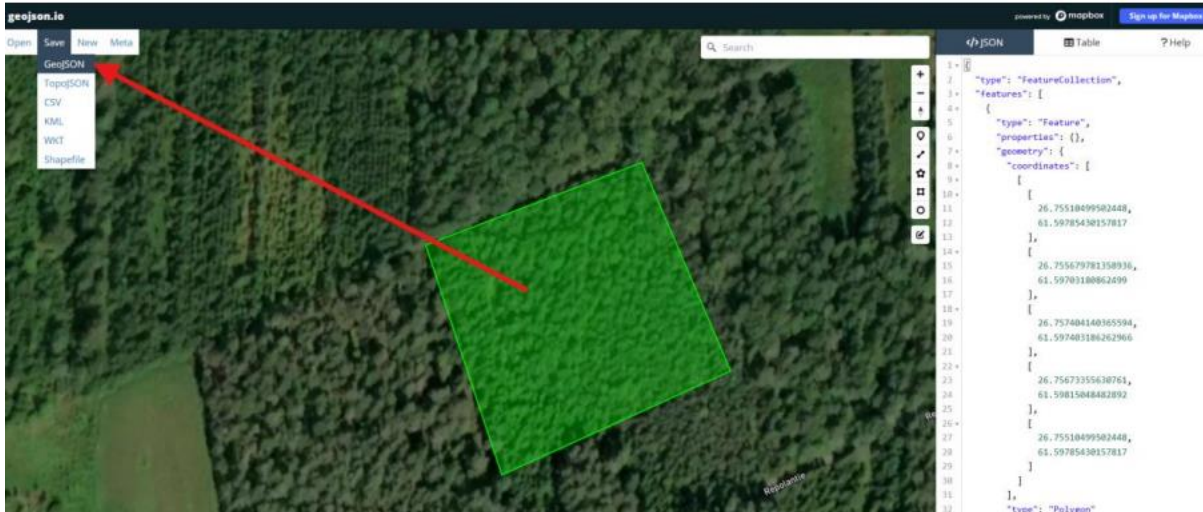
Step 2

Choose the polygon symbol to draw a polygon. Draw all the polygons you need for this GeoJSON file.



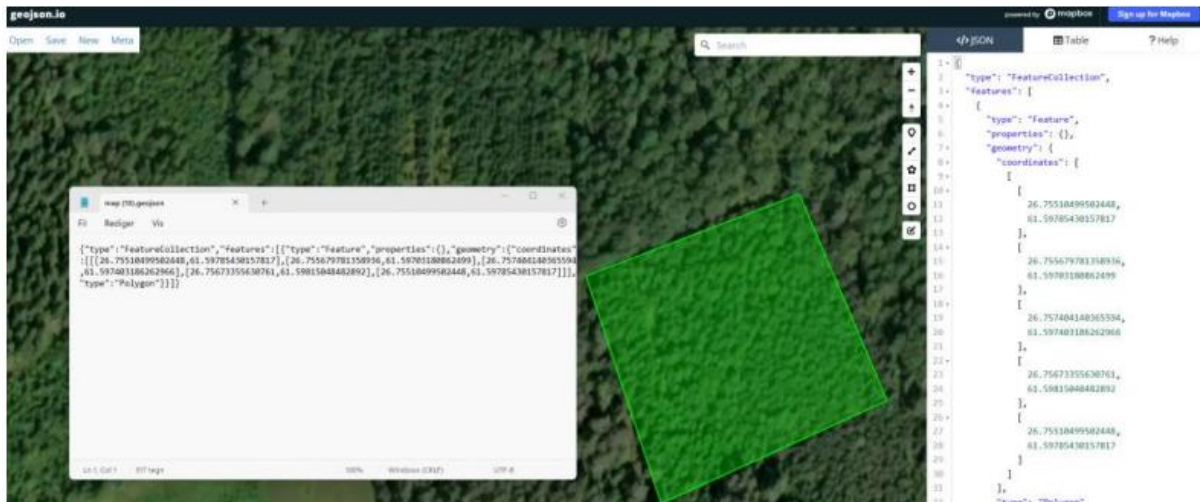
Step 3

Save the geolocation coordinates in a GeoJSON file.



Step 4

The GeoJSON file will look like the following example:

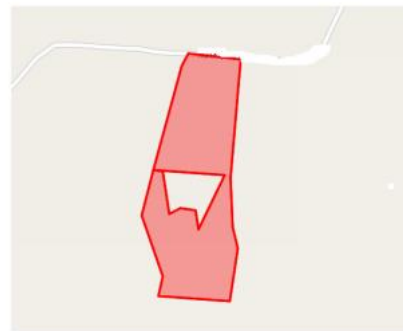
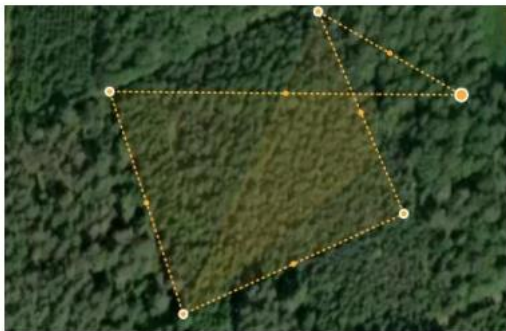


Please make sure to save the file as a GeoJSON file, and not as a text document. This must be attached and delivered together with any additional evidence as requested in Salling Group's EUDR request.

Notice: incorrect polygons

According to the EU Commission ‘*polygons with holes (e.g., doughnut shapes) and shapes with crossing lines are not supported and will not be further processed. If a doughnut shape is needed, it can be created by combining two half-doughnut shaped polygons.*’

Examples provided below.



In case you should have any questions to the above feel free to contact us via EUDR@sallinggroup.com